



**Identifying and Reducing Prejudices as a Source of Conflict between Roma and Non-Roma Population - Cases of Bulgaria, Italy, Romania and Slovenia Compared – REDUPRE (2011-2013)**

*Statistics concerning the Roma population in the West and North-West Regions of Romania*

*- Timiș, Arad, Bihor Counties -*

Timișoara  
2011



## *Contents*

<b>A. The localities with the most numerous Roma communities in the West and North-West Regions of Romania</b>	<b>3</b>
<b>I. West Region</b>	<b>3</b>
I.1. Timiș County	3
I.2. Arad County	7
<b>II. North-West Region</b>	
II.1. Bihor County	11
<b>B. The population structure by ethnic group and mother tongue in Romania, West and North-West Regions</b>	<b>15</b>
<b>I. Romania</b>	
I.1. Population structure by ethnic group	15
I.2. Population structure by mother tongue	15
<b>II. West Region</b>	<b>16</b>
II.1.1. Population structure by ethnic group	
II.1.2. Population structure by mother tongue	17
II.2.1. Population structure by ethnic group – Timiș County	17
II.2.2. Population structure by mother tongue – Timiș County	18
II.3.1. Population structure by ethnic group – Arad County	19
II.3.2. Population structure by mother tongue – Arad County	19
<b>III. North-West Region</b>	
II.1.1. Population structure by ethnic group	20
II.1.2. Population structure by mother tongue	21
II.2.1. Population structure by ethnic group – Bihor County	21
II.2.2. Population structure by mother tongue – Bihor County	22

**A. The localities with the most numerous Roma communities in the West and North-West Regions of Romania (Timiș, Arad, Bihor Counties)**

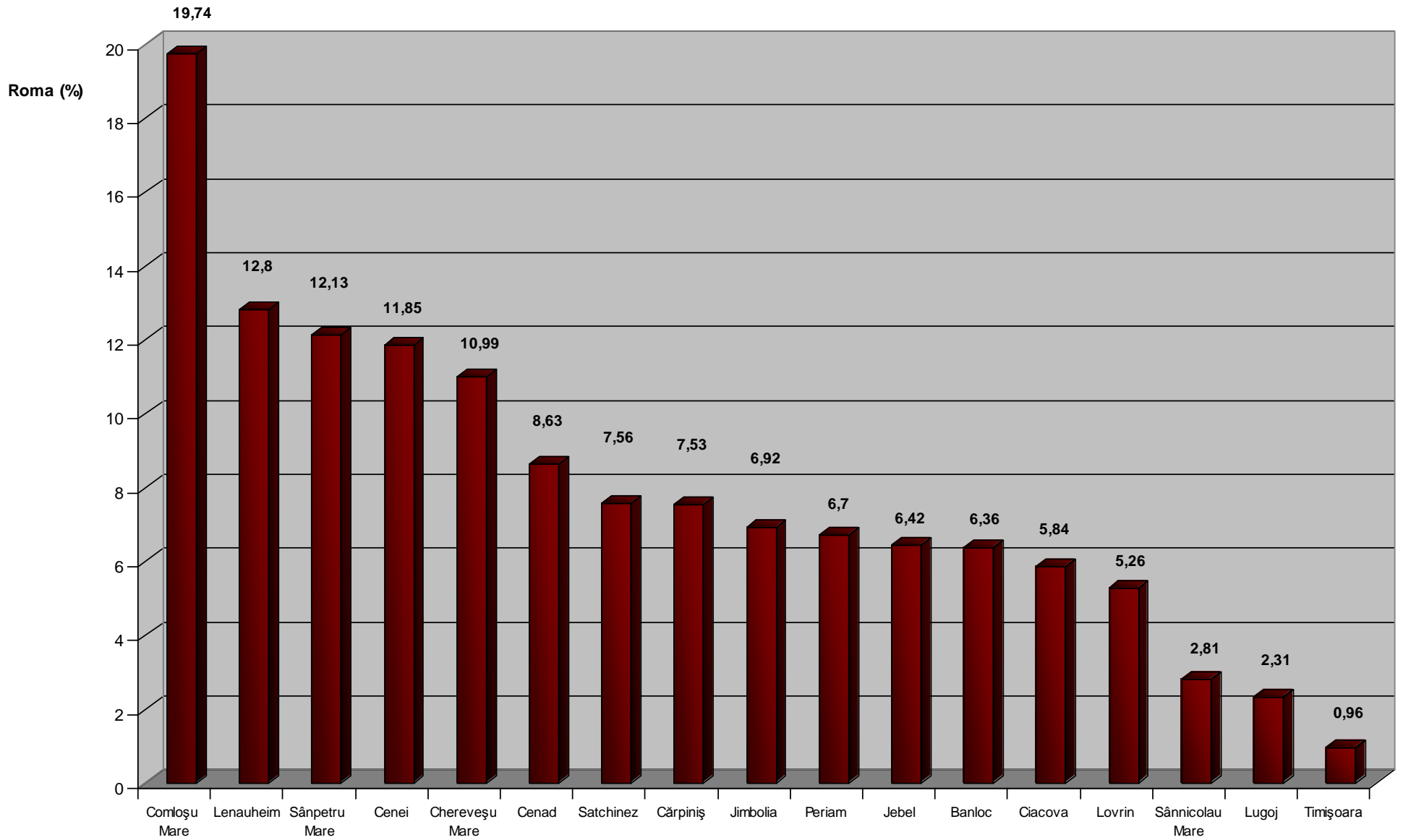
**I. West Region**

**I.1. Timiș County**

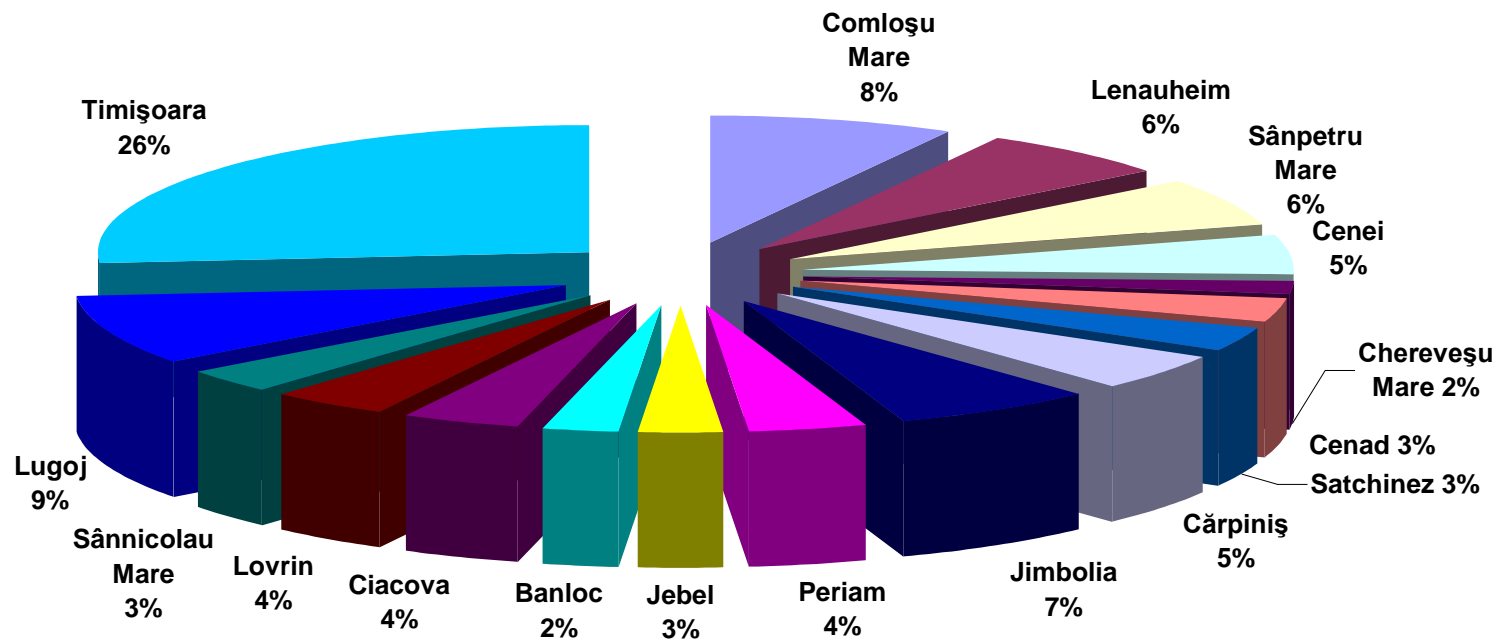
**Table I.1.1. The localities with the most numerous Roma communities**

Nr	Locality	Population	Romanians (%)	Hungarians (%)	Roma (%)	Germans (%)	Serbs (%)	Slovaks (%)	Bulgarians (%)	Ukrainians (%)
1	Comloșu Mare	4806	74,15	1,08	19,74	3,14	-	-	-	-
2	Lenaueim	5676	81,34	1,74	12,8	3,4	-	-	-	-
3	Sânpetru Mare	5844	72,51		12,13	0	13,2	-	-	-
4	Cenei	4799	63,57	9,06	11,85	0	12,2	-	-	-
5	Chereveșu Mare	1910	70,31	10,83	10,99	0	-	6,96	-	-
6	Cenad	4249	66,36	15,46	8,63	0	7,53	-	-	-
7	Satchinez	4638	88,35	1,16	7,56	1,7	-	-	-	-
8	Cărpiniș	7166	86,46	3,94	7,53	1,73	-	-	-	-
9	Jimbolia	11136	72,44	14,75	6,92	4,62	-	-	-	-
10	Periam	6626	87,56	2,02	6,7	2,61	-	-	-	-
11	Jebel	5350	91,28	1,23	6,42	-	-	-	-	-
12	Banloc	4525	75,6	5,19	6,36	-	-	-	-	-
13	Ciacova	7285	80,3	8,41	5,84	2,62	-	-	-	-
14	Lovrin	8932	84,6	2,89	5,26	4,98	-	-	-	-
15	Sânnicolau Mare	12914	76,79	9,36	2,81	3,18	3,58	-	3,62	6,98
16	Lugoj	44636	82,98	9,57	2,31	2,95	-	-	-	-
17	Timișoara	317660	85,52	7,64	0,96	2,25	1,98	-	-	-

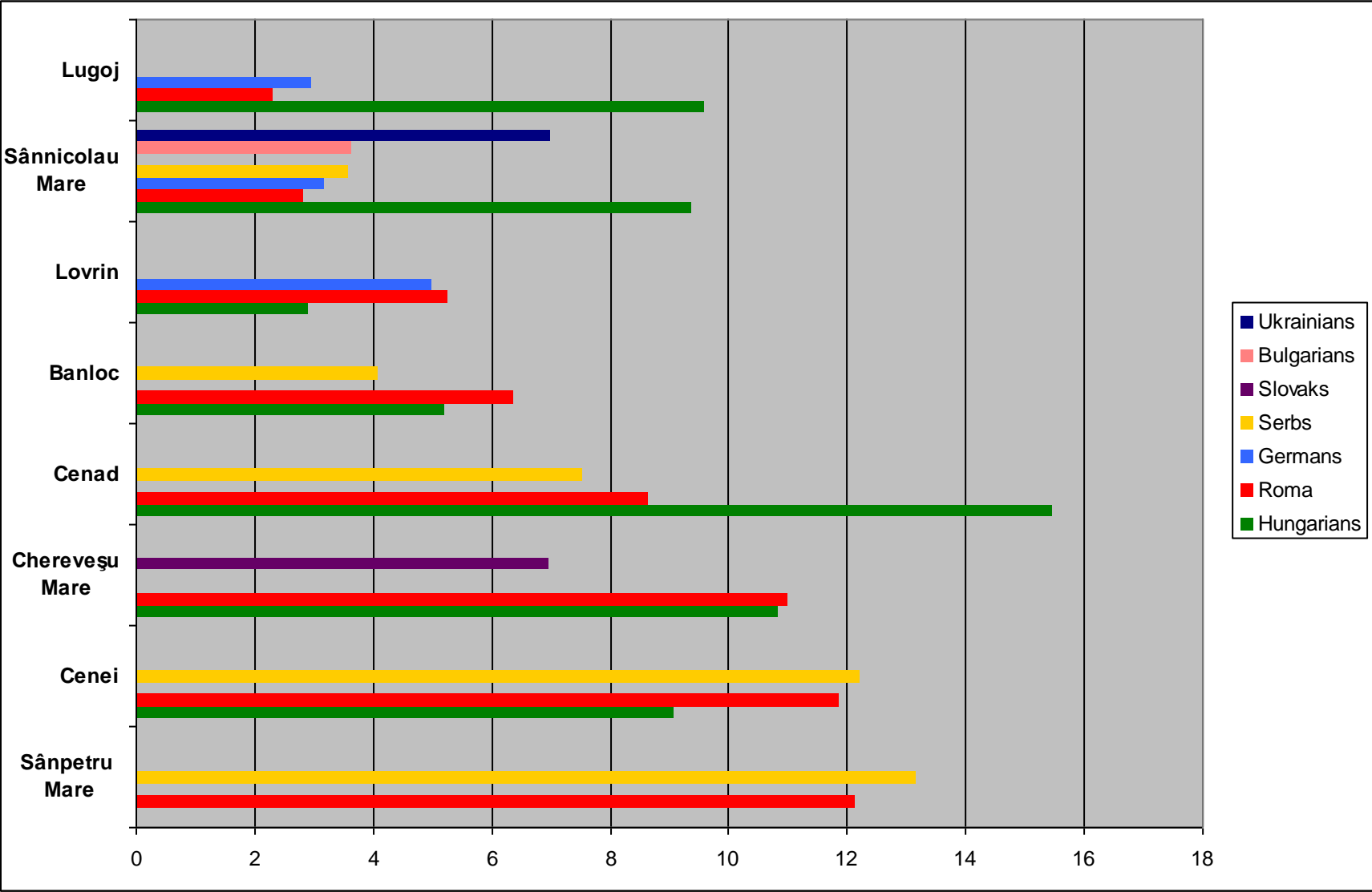
**Fig. I.1.1 The share of Roma in the population of each locality  
- Timiș County –**



**Fig. I.1.2 The share of Roma in the total population of Timiș County**



**Fig. I.1.3. The localities where the number of inhabitants belonging to the Roma ethnic group is approximately equal to the number of inhabitants belonging to other ethnic groups  
- Timiș County -**



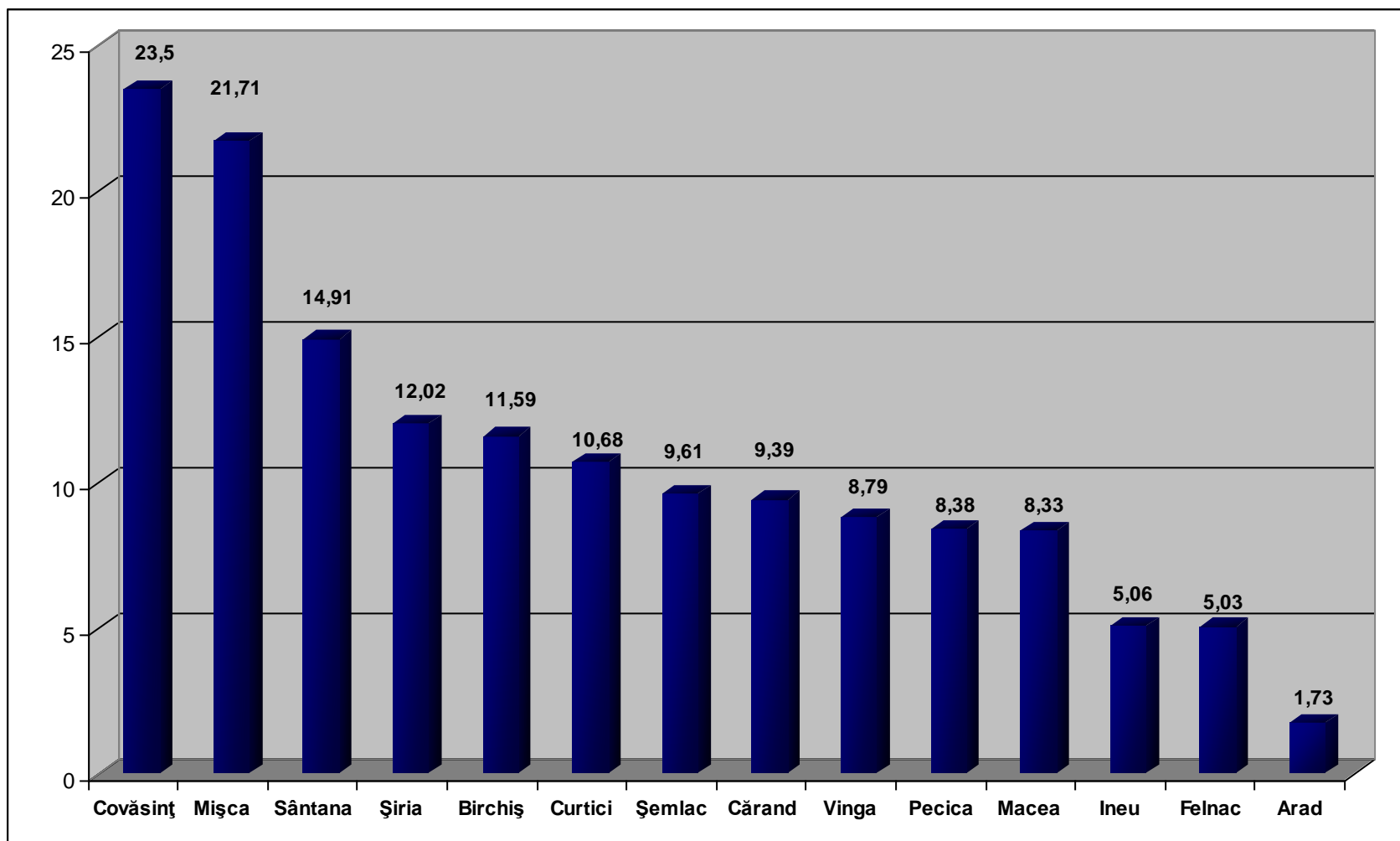
## I. West Region

### I.2. Arad County

**Table I.2.1. The localities with the most numerous Roma communities**

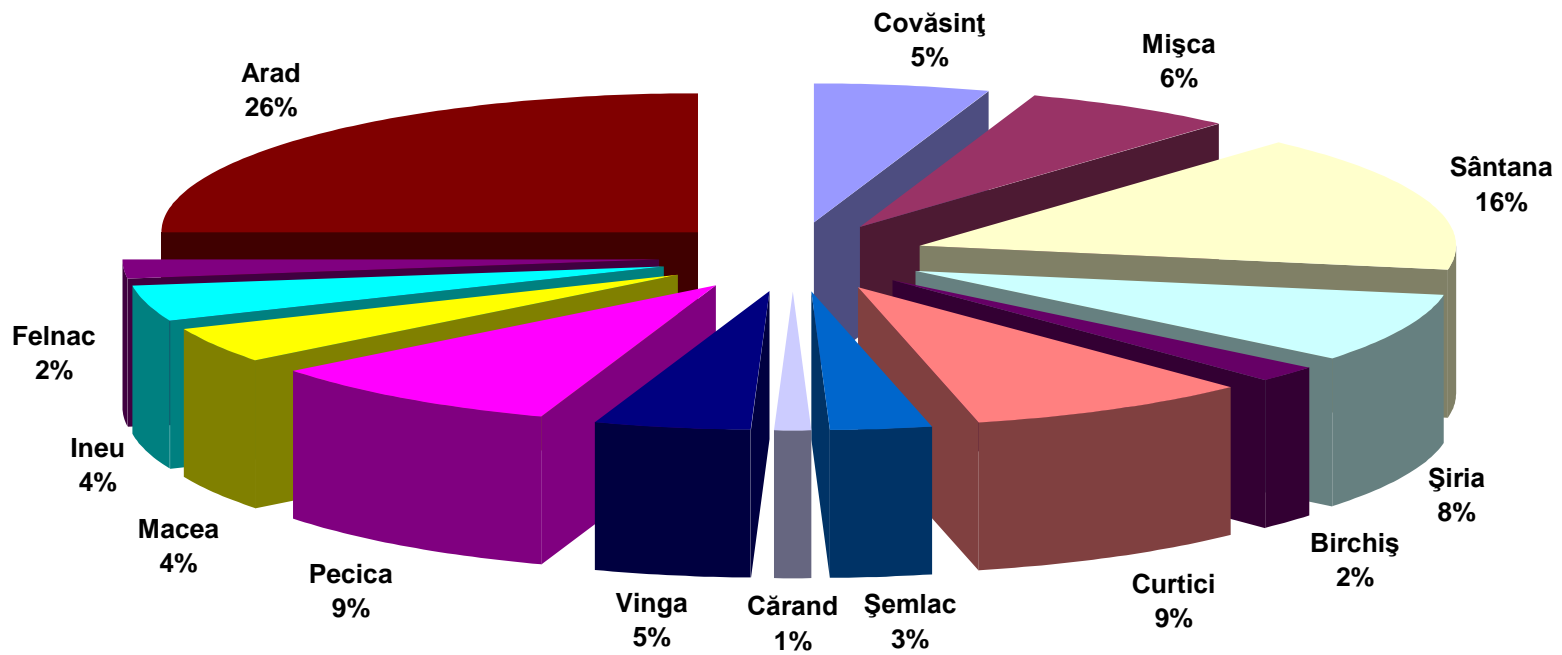
Nr.	Locality	Population	Romanians (%)	Hungarians (%)	Roma (%)	Germans (%)	Serbs (%)	Slovaks (%)	Bulgarians (%)
1	Covăsiu	2659	75,66	0,56	23,5				
2	Mișca	3546	36,97	40,49	21,71				
3	Sântana	12936	79,08	2,19	14,91	3,49			
4	Șiria	8140	81,26	4,42	12,02	1,8			
5	Birchiș	2044	87,72	0,48	11,59				
6	Curtici	9722	69,69	19,07	10,68				
7	Șemlac	3787	80,8	3,59	9,61	3,64			
8	Cărand	1320	89,54	0,22	9,39				
9	Vinga	6388	53,16	24,87	8,79			2,42	8,01
10	Pecica	13024	57,05	32,57	8,38				
11	Macea	6169	85,6	3,3	8,33	2,2			
12	Ineu	10207	85,62	8,42	5,06				
13	Felnac	5182	87,3	1,91	5,03		4,26		
14	Arad	172827	82,72	13,01	1,73	1,3			

**Fig. I.2.1 The share of Roma in the population of each locality**  
- Arad County -

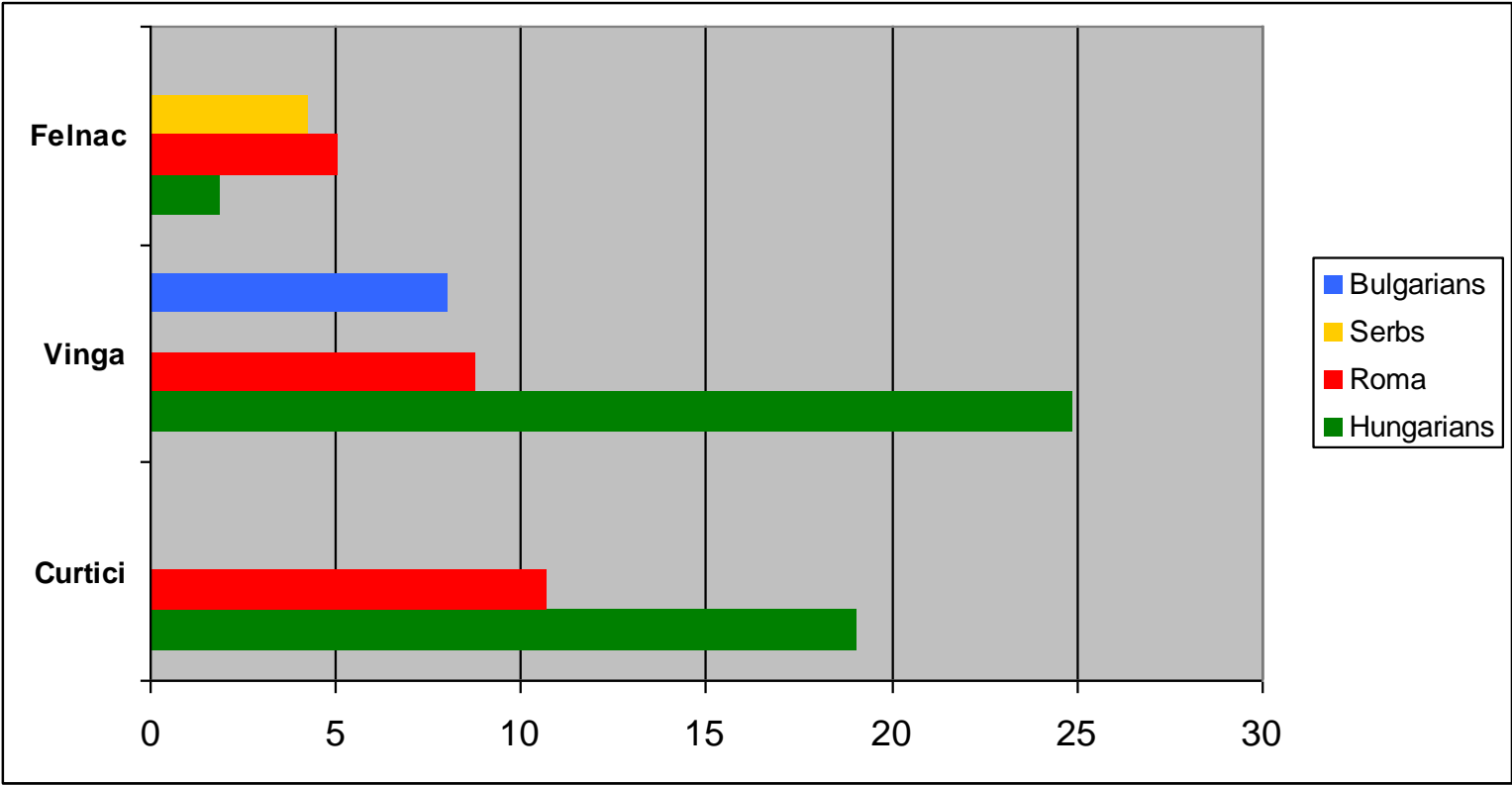




**Fig. I.2.2 The share of Roma in the total population of Arad County**



**Fig. I.2.3. The localities where the number of inhabitants belonging to the Roma ethnic group is approximately equal to the number of inhabitants belonging to other ethnic groups**  
- Arad County -



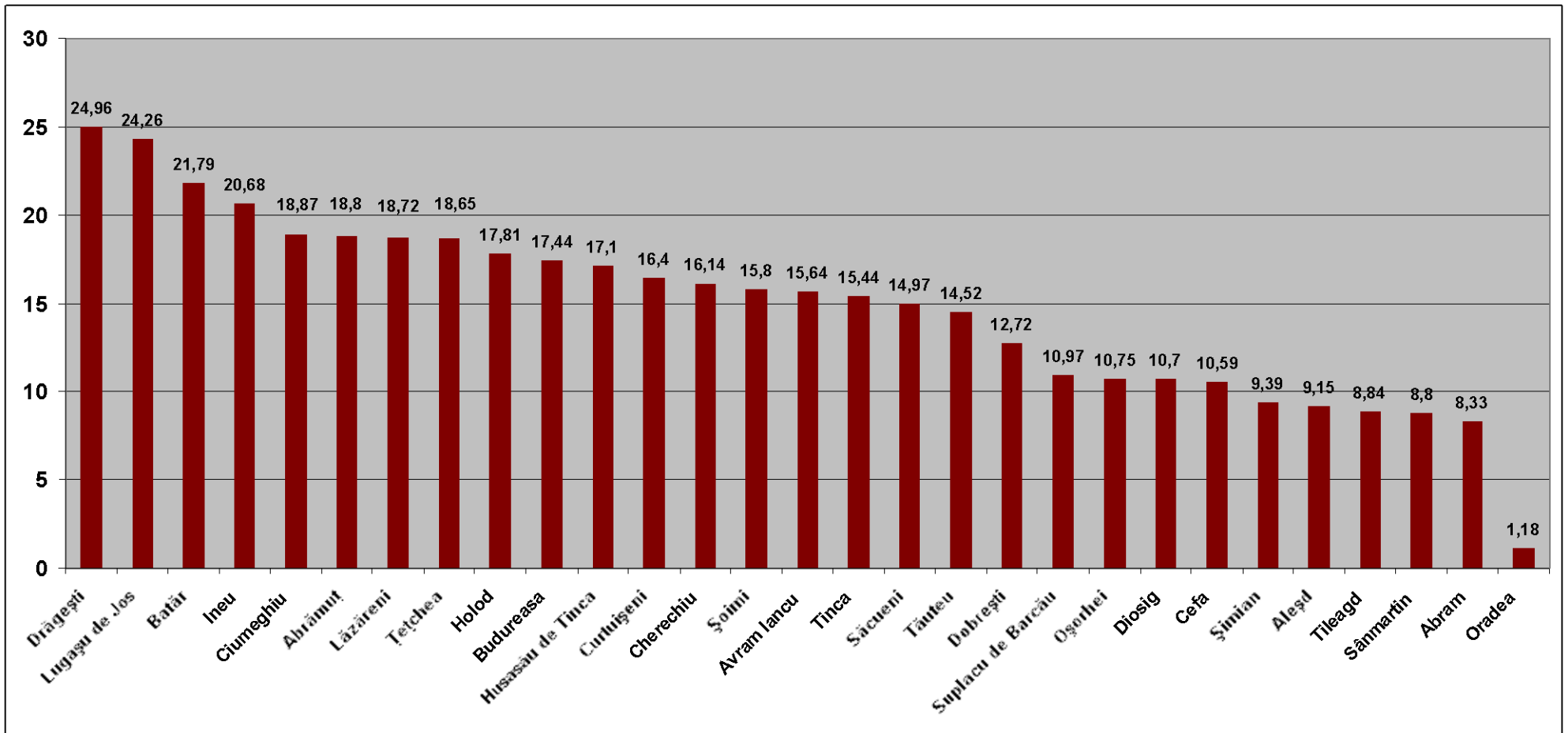
## II. North-West Region

### II.1. Bihor County

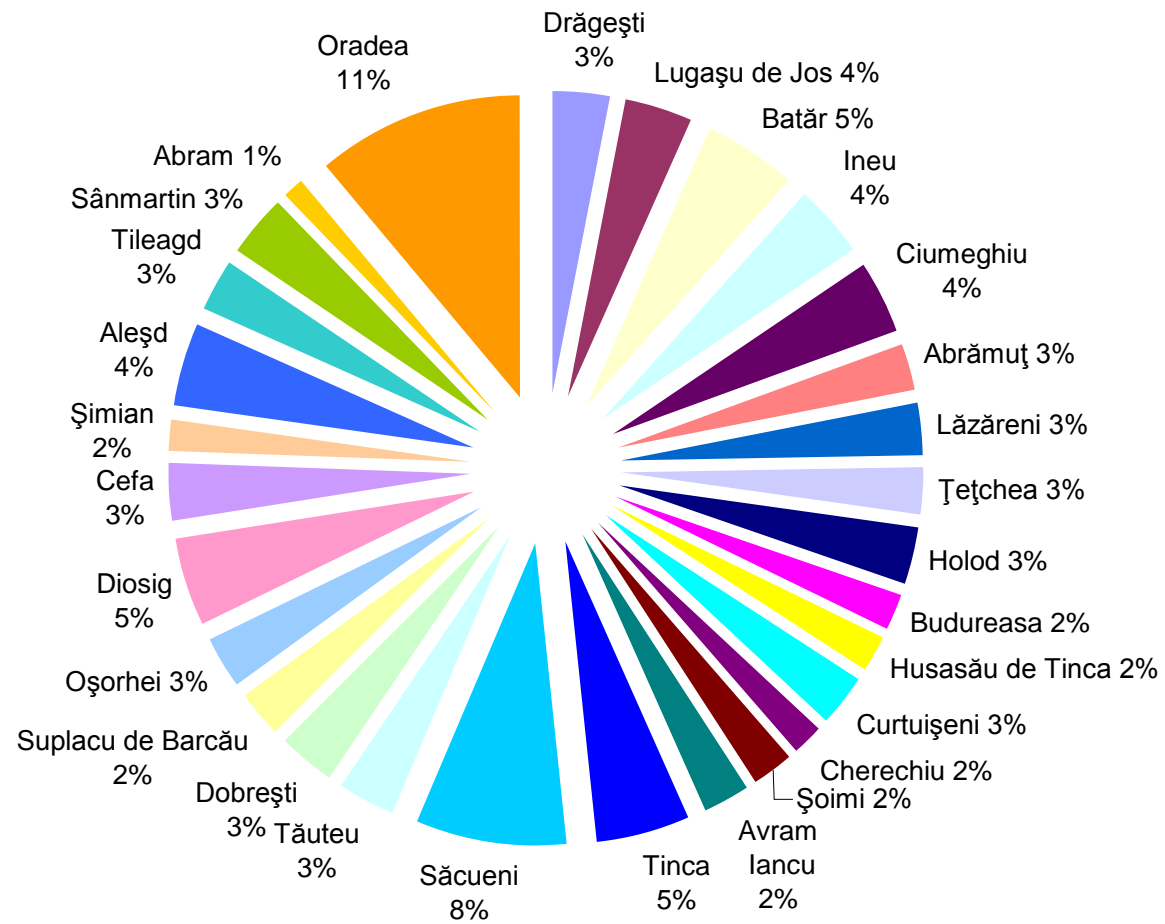
Table II.1 The localities with the most numerous Roma communities

Nr.	Locality	Population	Romanians (%)	Romanians	Hungarians (%)	Hungarians	Roma (%)	Roma	Slovaks (%)	Slovaks
1	Drăgești	2600	74,76	1944	0	0	24,96	649		0
2	Lugașu de Jos	3314	48,67	1613	19,31	640	24,26	804	7,57	251
3	Batăr	5222	63,04	3292	15,09	788	21,79	1138		0
4	Ineu	4075	68,17	2778	10,99	448	20,68	843		0
5	Ciumeghiu	4498	52,44	2359	27,9	1255	18,87	849		0
6	Abrămuț	3020	29,73	898	50,52	1526	18,8	568		0
7	Lăzăreni	3034	81,08	2460		0	18,72	568		0
8	Tețchea	3141	71,47	2245	9,13	287	18,65	586		0
9	Holod	3526	81,99	2891		0	17,81	628		0
10	Budureasa	2671	82,4	2201	0,14	4	17,44	466		0
11	Husasău de Tinca	2350	81,23	1909		0	17,1	402		0
12	Curtuișeni	3774	25,09	947	58,45	2206	16,4	619		0
13	Cherechiu	2483	1,85	46	81,95	2035	16,14	401		0
14	Șoimi	3011	83,92	2527	0,23	7	15,8	476		0
15	Avram Iancu	3317	74,67	2477	9,61	319	15,64	519		0
16	Tinca	7446	66,42	4946	17,87	1331	15,44	1150		0
17	Săcueni	11665	7,63	890	77,23	9009	14,97	1746		0
18	Tăuteu	4488	55,57	2494	28,27	1269	14,52	652		0
19	Dobrești	5659	86,95	4921	0,12	7	12,72	720		0
20	Suplacu de Barcău	4610	34,42	1587	34,42	1587	10,97	506	20,26	934
21	Oșorhei	5887	65,78	3872	22,59	1330	10,75	633		0
22	Diosig	9653	32,63	3150	56,54	5458	10,7	1033		0
23	Cefa	6354	81,96	5208	6,53	415	10,59	673		0
24	Șimian	4045	22,49	910	67,49	2730	9,39	380		0
25	Aleșd	10415	65,17	6787	19,07	1986	9,15	953	6,19	645
26	Tileagd	7142	66,97	4783	23,21	1658	8,84	631		0
27	Sânmartin	7924	86,08	6821	4,73	375	8,8	697		0
28	Abram	3346	83,26	2786	8,27	277	8,33	279		0
29	Oradea	206614	70,31	145270	27,58	56984	1,18	2438		0

**Fig. II.1 The share of Roma in the population of each locality**  
 - Bihor County -

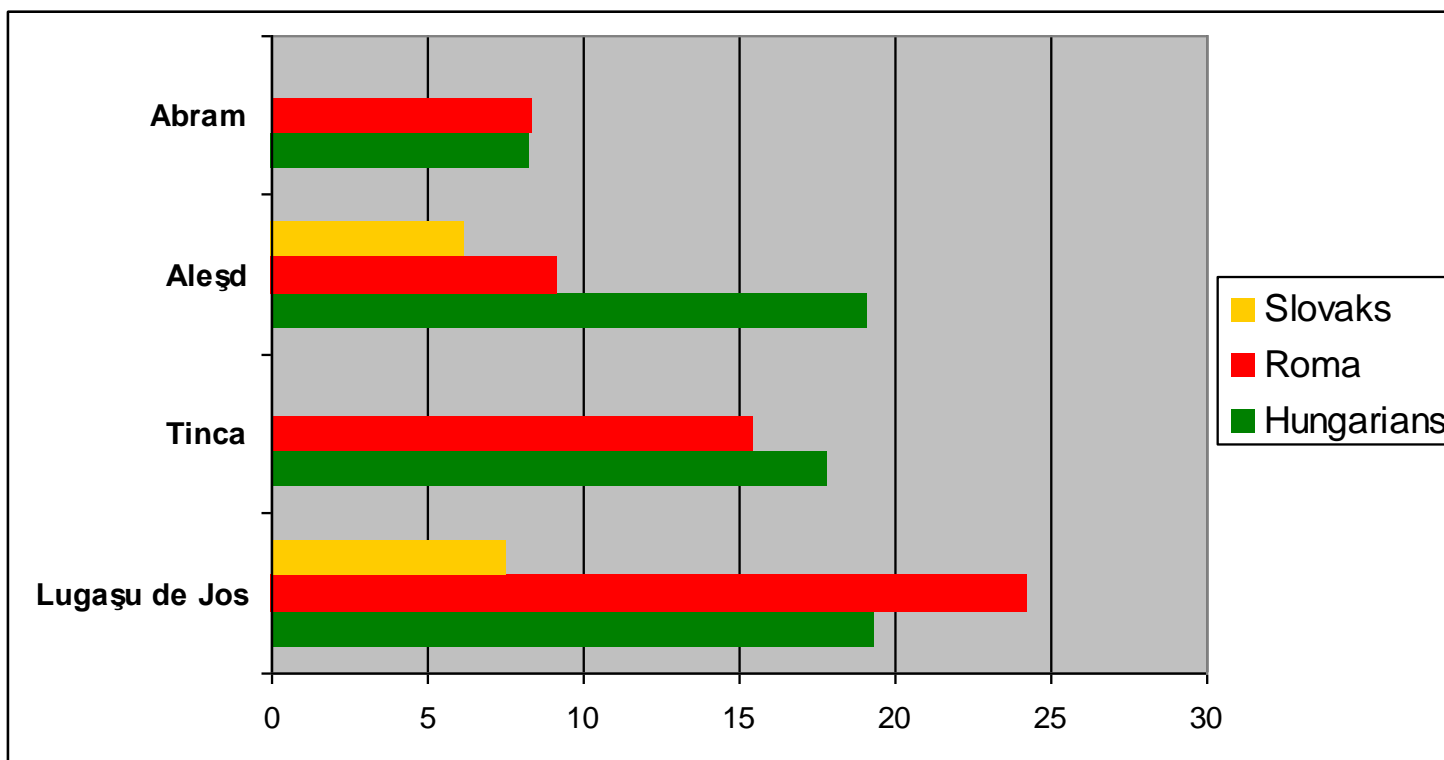


**Fig. II.2 The share of Roma in the total population of Bihor County**



**Fig. II. 3 The localities where the number of inhabitants belonging to the Roma ethnic group is approximately equal to the number of inhabitants belonging to other ethnic groups**

- Bihor County -



## Population structure by ethnic group and mother tongue in Romania, West and North-West Regions

### I. Romania

#### I.1 Population structure by ethnic group

Romanians	19,399,597	89.47 %
Hungarians	1,431,807	6.60 %
<b>Roma</b>	<b>535,140</b>	<b>2.46 %</b>
Ukrainians	61,098	0.28 %
Germans	59,764	0.27 %
Russians - Lipovans	35,791	0.16 %
Turks	32,098	0.14 %
Tatars	23,935	0.11 %
Serbs	22,561	0.10 %
Slovaks	17,226	0.07 %
Bulgarians	8,025	0.03 %
Croats	6,807	0.03 %
Greeks	6,472	0.02 %
Jews	5,785	0.02 %
Czechs	3,941	0.01 %
Polish	3,559	0.01 %
Italians	3,288	0.01 %
Chinese	2,243	0.01 %
Armenians	1,780	0.0 %
Csango	1,266	0.0 %
Other	16,850	0.07 %
Ethnic group not mentioned	1,941	0.0 %

#### I.2 Population structure by mother tongue

Romanian	19,736,517	91.03 %
Hungarian	1,443,970	6.66 %
<b>Romani</b>	<b>237,57</b>	<b>1.09 %</b>
Ukrainian	57,407	0.26 %
German	44,888	0.20 %
Russian-Lipovan	29,246	0.13 %
Turk	28,115	0.12 %

<b>Tatar</b>	21,272	0.09 %
<b>Serbian</b>	20,411	0.09 %
<b>Slovak</b>	16,027	0.07 %
<b>Bulgarian</b>	6,735	0.03 %
<b>Croatian</b>	6,355	0.02 %
<b>Greek</b>	4,17	0.01 %
<b>Jewish</b>	951	0.0 %
<b>Czech</b>	3,381	0.01 %
<b>Polish</b>	2,69	0.01 %
<b>Italian</b>	2,531	0.01 %
<b>Chinese</b>	2,266	0.01 %
<b>Armenian</b>	721	0.0 %
<b>Other</b>	13,621	0.06 %
<b>Mother tongue not mentioned</b>	2130	0.0 %
<b>Total: 21,680,974</b>		

## II. West Region (Hunedoara, Timiș, Caraș-Severin Counties)

### II.1.1 Population by ethnic group

<b>Romanians</b>	1,689,443	86.25 %
<b>Hungarians</b>	131,059	6.69 %
<b>Roma</b>	<b>48,485</b>	<b>2.47 %</b>
<b>Ukrainians</b>	12,806	0.65 %
<b>Germans</b>	27,112	1.38 %
<b>Russians - Lipovans</b>	297	0.01 %
<b>Turks</b>	196	0.01 %
<b>Tatars</b>	27	0.0 %
<b>Serbs</b>	20,624	1.05 %
<b>Slovaks</b>	8,043	0.41 %
<b>Bulgarians</b>	6,468	0.33 %
<b>Croats</b>	6,665	0.34 %
<b>Greeks</b>	345	0.01 %
<b>Jews</b>	772	0.03 %
<b>Czechs</b>	2,971	0.15 %
<b>Polish</b>	279	0.01 %
<b>Italians</b>	712	0.03 %
<b>Chinese</b>	51	0.0 %
<b>Armenians</b>	50	0.0 %
<b>Csango</b>	47	0.0 %



Other	1,96	0.10 %
Ethnic group not mentioned	236	0.01 %
<b>Total: 1,958,648</b>		

## II.1.2 Population structure by mother tongue

Romanian	1,730,832	88.36 %
Hungarian	123,555	6.30 %
<b>Romani</b>	<b>26,065</b>	<b>1.33 %</b>
Ukrainian	11,166	0.57 %
German	22,573	1.15 %
Russian-Lipovan	277	0.01 %
Turk	163	0.0 %
Tatar	23	0.0 %
Serbian	18,733	0.95 %
Slovak	7,367	0.37 %
Bulgarian	5,999	0.30 %
Croatian	6,29	0.32 %
Greek	272	0.01 %
Jewish	88	0.0 %
Czech	2,593	0.13 %
Polish	139	0.0 %
Italian	563	0.02 %
Chinese	56	0.0 %
Armenian	16	0.0 %
Other	1,739	0.08 %
Mother tongue not mentioned	139	0.0 %
<b>Total: 1,958,648</b>		

### II.2.1. Population structure by ethnic group – Timiș County

Romanians	565,639	83.43 %
Hungarians	50,556	7.45 %
<b>Roma</b>	<b>16,084</b>	<b>2.37 %</b>
Ukrainians	7,321	1.07 %
Germans	14,174	2.09 %
Russians - Lipovans	144	0.02 %
Turks	74	0.01 %
Tatars	8	0.0 %
Serbs	13,273	1.95 %

Slovaks	1,908	0.28 %
Bulgarians	5,562	0.82 %
Croats	371	0.05 %
Greeks	209	0.03 %
Jews	441	0.06 %
Czechs	283	0.04 %
Polish	79	0.01 %
Italians	271	0.03 %
Chinese	18	0.0 %
Armenians	32	0.0 %
Csango	17	0.0 %
Other	1,311	0.19 %
Ethnic group not mentioned	151	0.02 %
<b>Total: 677,926</b>		

## II.2.2 Population structure by mother tongue – Timiș County

Romanian	579,663	85.50 %
Hungarian	47,707	7.03 %
<b>Romani</b>	<b>10,433</b>	<b>1.53 %</b>
Ukrainian	6,378	0.94 %
German	12,197	1.79 %
Russian-Lipovan	141	0.02 %
Turk	66	0.0 %
Tatar	9	0.0 %
Serbian	12,159	1.79 %
Slovak	1,636	0.24 %
Bulgarian	5,235	0.77 %
Croatian	296	0.04 %
Greek	187	0.02 %
Jewish	54	0.0 %
Czech	173	0.02 %
Polish	50	0.0 %
Italian	239	0.03 %
Chinese	23	0.0 %
Armenian	8	0.0 %
Other	1,173	0.17 %
Mother tongue not mentioned	99	0.01 %
<b>Total: 677,926</b>		

### II.3.1. Population structure by ethnic group – Arad County

Romanians	379,451	82.16 %
Hungarians	49,291	10.67 %
<b>Roma</b>	<b>17,664</b>	<b>3.82 %</b>
Ukrainians	1,741	0.37 %
Germans	4,852	1.05 %
Russians - Lipovans	59	0.01 %
Turks	60	0.01 %
Tatars	13	0.0 %
Serbs	1,217	0.26 %
Slovaks	5,695	1.23 %
Bulgarians	819	0.17 %
Croats	17	0.0 %
Greeks	25	0.0 %
Jews	178	0.03 %
Czechs	152	0.03 %
Polish	48	0.01 %
Italians	240	0.05 %
Chinese	14	0.0 %
Armenians	6	0.0 %
Csango	13	0.0 %
Other	214	0.04 %
Ethnic group not mentioned	22	0.0 %
<b>Total: 461,791</b>		

### II.3.2 Population structure by mother tongue – Arad County

Romanian	391,269	84.72 %
Hungarian	48,282	10.45 %
<b>Romani</b>	<b>9,001</b>	<b>1.94 %</b>
Ukrainian	1,375	0.29 %
German	4,053	0.87 %
Russian-Lipovan	49	0.01 %
Turk	52	0.01 %
Tatar	9	0.0 %
Serbian	884	0.19 %
Slovak	5,489	1.18 %
Bulgarian	707	0.15 %
Croatian	7	0.0 %

<b>Greek</b>	12	0.0 %
<b>Jewish</b>	21	0.0 %
<b>Czech</b>	143	0.03 %
<b>Polish</b>	27	0.0 %
<b>Italian</b>	216	0.04 %
<b>Chinese</b>	14	0.0 %
<b>Armenian</b>	5	0.0 %
<b>Other</b>	163	0.03 %
<b>Mother tongue not mentioned</b>	13	0.0 %
<b>Total: 461,791</b>		

### III. North -West Region (Bistrița Năsăud, Maramureș, Cluj, Satu-Mare, Sălaj, Bihor Counties)

#### III. 1.1. Population structure by ethnic group

<b>Romanians</b>	2,054,793	74.99 %
<b>Hungarians</b>	529,204	19.31 %
<b>Roma</b>	<b>96,013</b>	<b>3.50 %</b>
<b>Ukrainians</b>	36,103	1.31 %
<b>Germans</b>	11,299	0.41 %
<b>Russians - Lipovans</b>	229	0.0 %
<b>Turks</b>	112	0.0 %
<b>Tatars</b>	20	0.0 %
<b>Serbs</b>	111	0.0 %
<b>Slovaks</b>	8,982	0.32 %
<b>Bulgarians</b>	67	0.0 %
<b>Croats</b>	9	0.0 %
<b>Greeks</b>	248	0.0 %
<b>Jews</b>	631	0.02 %
<b>Czechs</b>	33	0.0 %
<b>Polish</b>	73	0.0 %
<b>Italians</b>	392	0.01 %
<b>Chinese</b>	41	0.0 %
<b>Armenians</b>	89	0.0 %
<b>Csango</b>	24	0.0 %
<b>Other</b>	1,288	0.04 %
<b>Ethnic group not mentioned</b>	303	0.01 %
<b>Total:</b>	<b>2,740,064</b>	

### III.I.2. Population structure by mother tongue

Romanian	2,098,639	76.59 %
Hungarian	545,055	19.89 %
<b>Romani</b>	<b>44,984</b>	<b>1.64 %</b>
Ukrainian	35,079	1.28 %
German	5,135	0.18 %
Russian-Lipovan	205	0.0 %
Turk	99	0.0 %
Tatar	15	0.0 %
Serbian	70	0.0 %
Slovak	8,562	0.31 %
Bulgarian	41	0.0 %
Croatian	6	0.0 %
Greek	211	0.0 %
Jewish	96	0.0 %
Czech	17	0.0 %
Polish	45	0.0 %
Italian	364	0.01 %
Chinese	41	0.0 %
Armenian	13	0.0 %
Other	1,1	0.04 %
Mother tongue not mentioned	287	0.01 %
<b>Total: 2,740,064</b>		

### III.2.1 Population structure by ethnic group – Bihor County

Romanians	404,468	67.38 %
Hungarians	155,829	25.96 %
<b>Roma</b>	<b>30,089</b>	<b>5.01 %</b>
Ukrainians	198	0.03 %
Germans	1,163	0.19 %
Russians - Lipovans	75	0.01 %
Turks	15	0.0 %
Tatars	4	0.0 %
Serbs	35	0.0 %
Slovaks	7,37	1.22 %
Bulgarians	31	0.0 %
Croats	4	0.0 %

<b>Greeks</b>	74	0.01 %
<b>Jews</b>	224	0.03 %
<b>Czechs</b>	15	0.0 %
<b>Polish</b>	22	0.0 %
<b>Italians</b>	155	0.02 %
<b>Chinese</b>	1	0.0 %
<b>Armenians</b>	12	0.0 %
<b>Csango</b>	4	0.0 %
<b>Other</b>	338	0.05 %
<b>Ethnic group not mentioned</b>	120	0.01 %
<b>Total: 600,246</b>		

### III.2.2. Population structure by mother tongue – Bihor County

<b>Romanian</b>	411,542	68.56 %
<b>Hungarian</b>	161,668	26.93 %
<b>Romani</b>	<b>18,177</b>	<b>3.02 %</b>
<b>Ukrainian</b>	132	0.02 %
<b>German</b>	783	0.13 %
<b>Russian-Lipovan</b>	54	0.0 %
<b>Turk</b>	15	0.0 %
<b>Tatar</b>	5	0.0 %
<b>Serbian</b>	27	0.0 %
<b>Slovak</b>	7,121	1.18 %
<b>Bulgarian</b>	17	0.0 %
<b>Croatian</b>	4	0.0 %
<b>Greek</b>	60	0.0 %
<b>Jewish</b>	25	0.0 %
<b>Czech</b>	8	0.0 %
<b>Polish</b>	18	0.0 %
<b>Italian</b>	140	0.02 %
<b>Chinese</b>	1	0.0 %
<b>Armenian</b>	6	0.0 %
<b>Other</b>	301	0.05 %
<b>Mother tongue not mentioned</b>	142	0.02 %
<b>Total: 600,246</b>		